

Guide for installation and operation of data collector for LXI 661 generator

Ver:1.0 Dade:2016-03-14



Version history

Date	Version	Content
2016-03-14	1.0	Initial release

1. Installation steps

1.1. First, remove the rear cover and install the card (as shown in Fig.1).

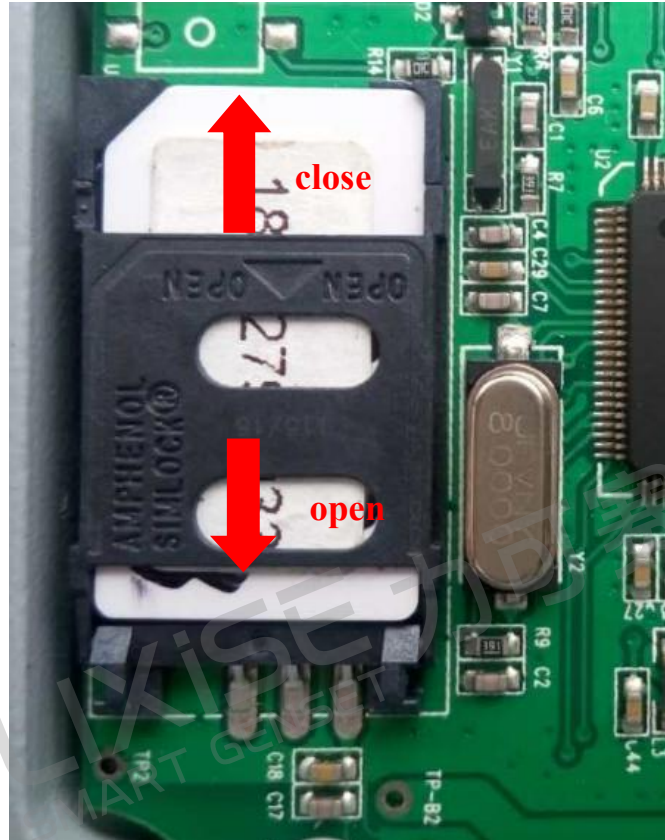


Fig.1

1.2. Install the rear cover well and clip the connecting line (as shown in Fig.2).



Fig.2

1.3. Connect Phase A to Generating Input L1 and the null line to Generating Input N. (as shown in Fig.2).

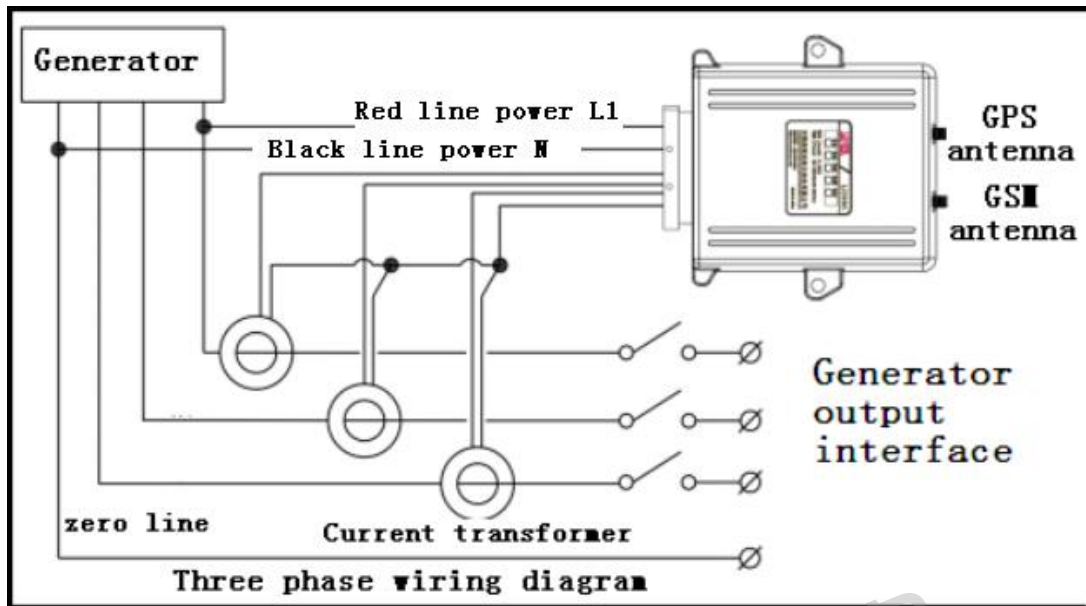


Fig.3

1.4. The current of Load L1, L2 and L3 through current transformer is Current A, Current B and Current C respectively (shown in Fig.4);



Fig.4

2. Monitoring operation steps:

(Instruction for LIXISE cloud system is as shown below.)

2.1. Login system .

Open the website:<http://115.28.73.206/>, enter the user name ZXAdmin and the password 000000 and click to login (as shown in Fig.5);



Fig.5

2.2. New monitored engine generator.

After entering remote monitor system, click “Remote Monitor System”-> “Engine Generator State” on the left side navigation bar; click Button 1 to add equipment monitor, enter ID number (the barcode on LXI66x backboard) and alias (the name of generator equipment, for monitoring) and then click confirm (shown in Fig.6).

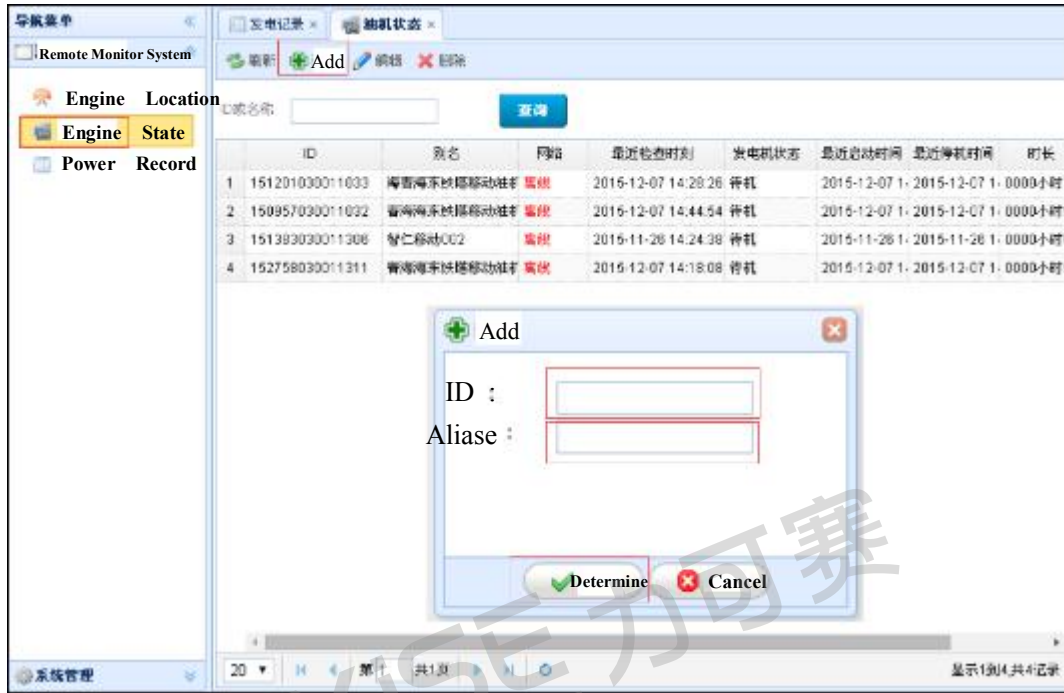


Fig.6

2.3. Start the generator until it is loaded successfully (load current shall be over 2A).

When the generating light of collector is constant on after flashing quickly for 3 minutes, it indicates normal power generation. At the same time, the network light of collector changes from quick flashing to slow flashing, it indicates the server is successfully connected to network. (shown in Fig.7)



Fig.7

- ✧ Indicator light for power generation
- ✧ Network indicator light

2.4. After starting the generator successfully and successful networking.

click the monitored generator set on the monitoring interface and observe whether the network is online. Operate a mouse and click the interface framework real time monitoring on the right to read all the data status of collector in real time, including mains data, power generation data, etc. (shown in Fig. 8).

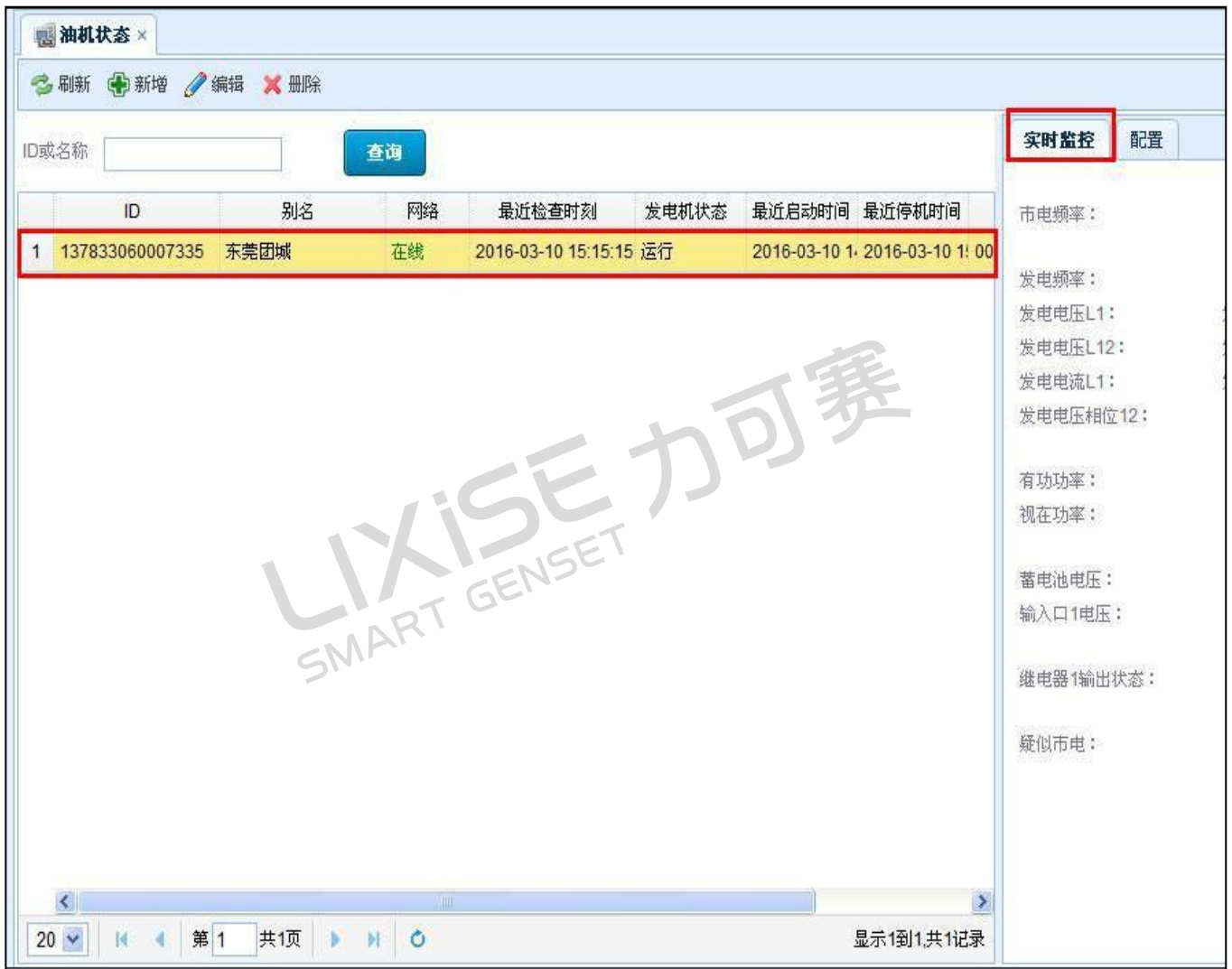


Fig.8

2.5. If you want to modify the collector information

(such as increasing SMS reporting function and for each starting, stopping and self-inspection every day, sending the generating voltage, current and other related data to relevant personnel); first, click “Configuration”(shown in Fig.9) button 1 and then click “Read Configuration (shown in Fig. 9) Button 2”; secondly, enter the cellphone number of related personnel in authorized user number; at last, click “Write Configuration (shown in Fig.9) Button 3”.

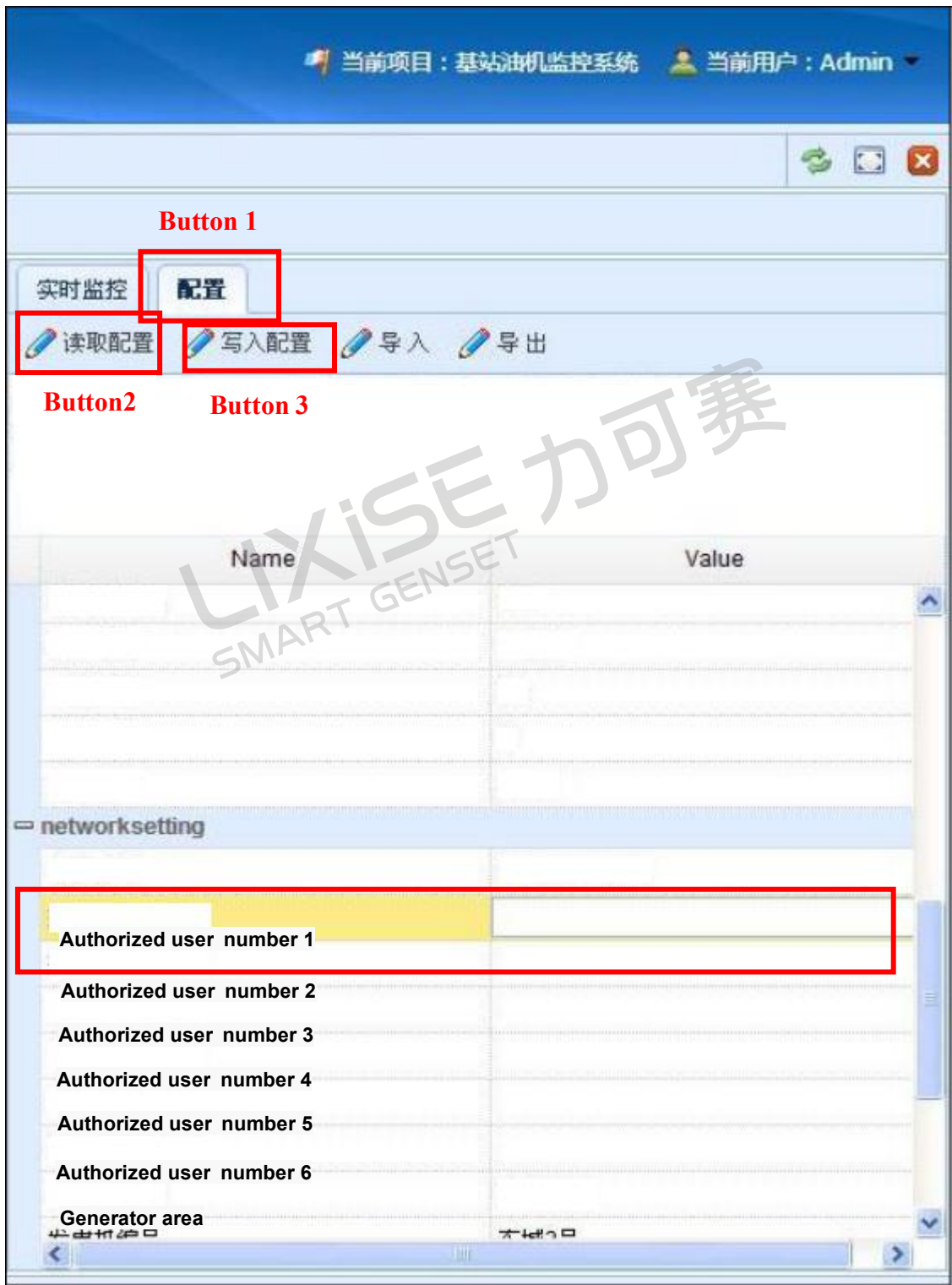



Fig.9

2.6. Query engine generator position

After entering remote monitor system, click “Remote Monitor System”->“Engine Generator

Location” on the left side navigation bar; the  on Baidu Map indicates the position of engine generator (shown in Fig.10).

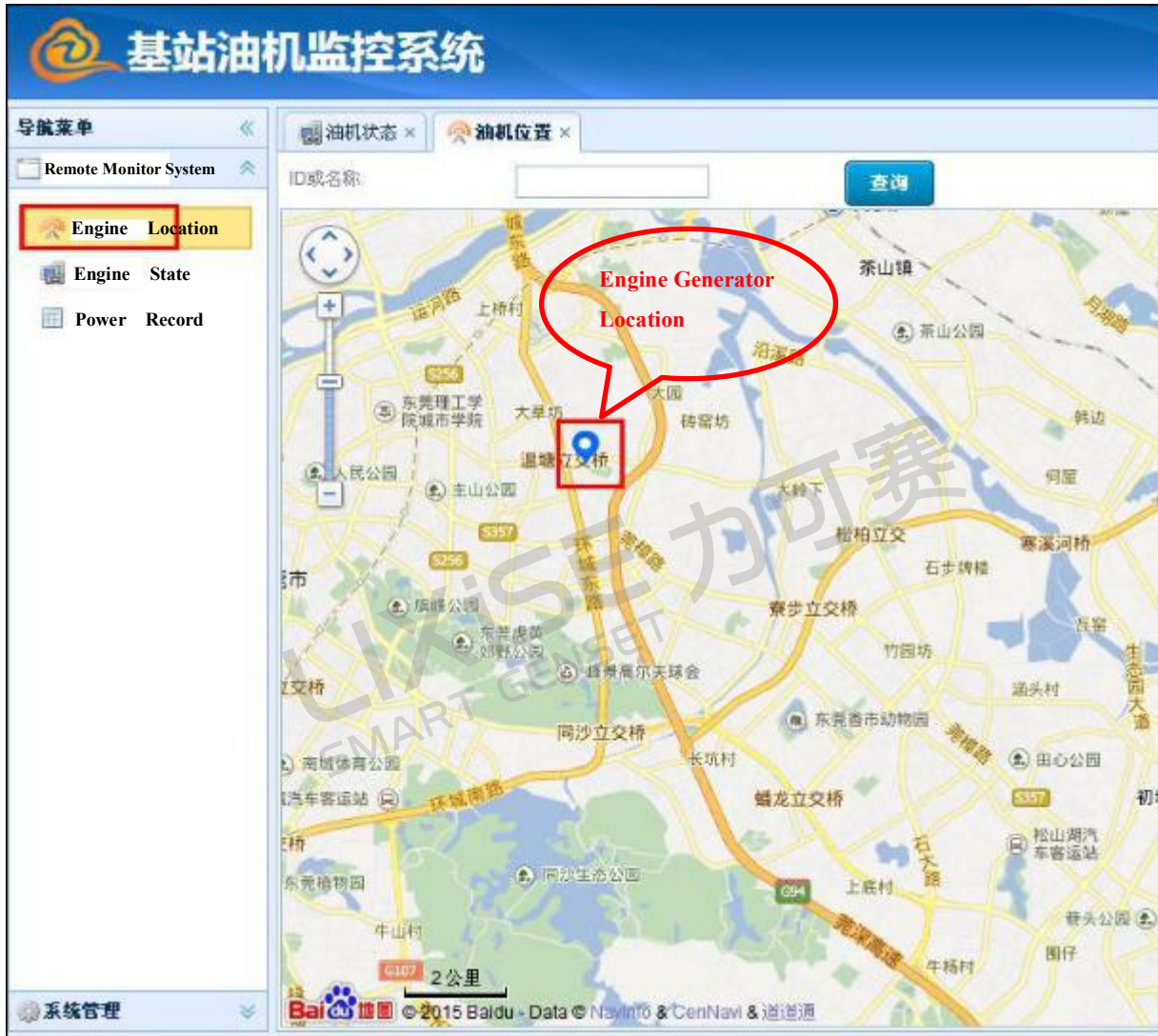


Fig.10

2.7. Query generator record

After entering remote monitor system, click “Remote Monitor System”-> “Power Generation Record” on the right navigation bar; operate Button 1, enter “Query Engine Generator ID” (the bar code on the panel of engine generator LXI660)->, select “Start Time and Deadline”-> operate Button 2 and click Query (shown in Fig.11).

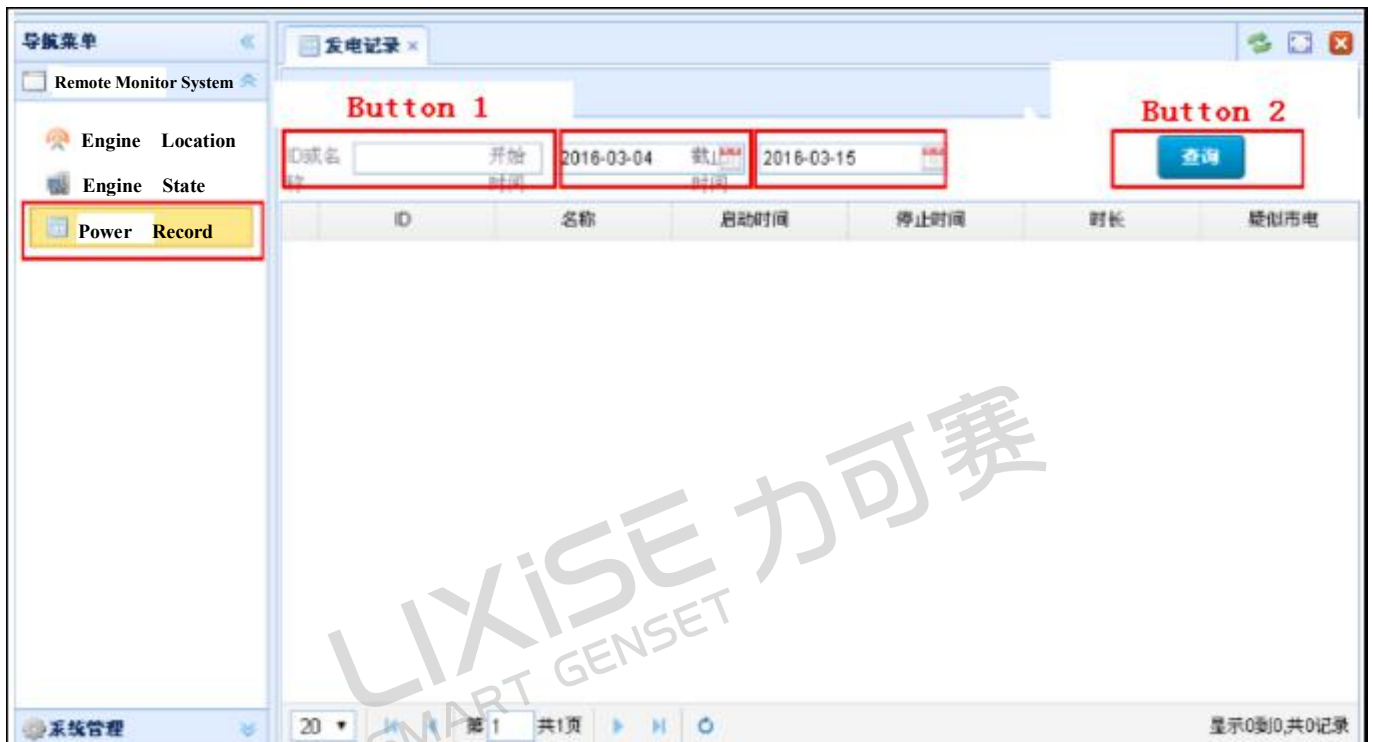


Fig.11